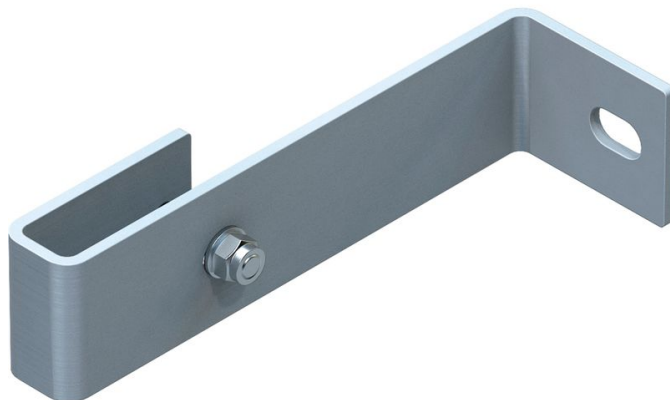




Wall bracket, rigid

Product description

- For 200 mm stand-off.
- The individual wall brackets may only be anchored and mounted using the tension straps on reinforced and approved concrete base or on a supporting steel structure. (Order no. 43263 galvanized steel or 44263 stainless steel).



Hints and special features

The maximum distance between the individual wall brackets is 2.00 m. But each ladder section must be mounted with at least 4 wall brackets. A separate static calculation will be required.

Product features

Warranty

10 years

Weight

1.2 kg

Product variants

SKU

43249

Material

Galvanised steel

SKU

44249

Material

Stainless steel