

Wall bracket, rigid

Product description

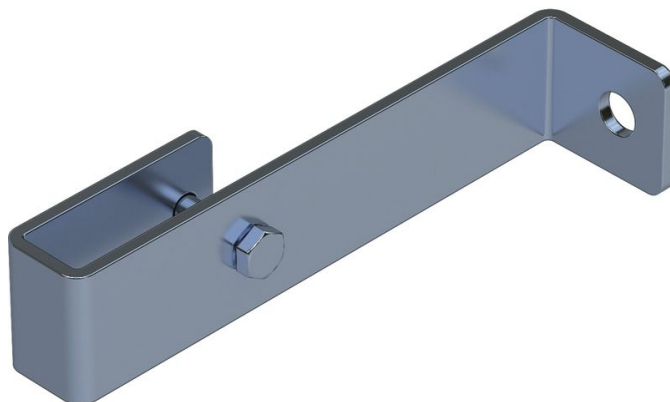
- For 150 mm stand-off.
- 1 set = 2 pcs.

Hints and special features

2 sets of wall brackets are required for ladders with 4-9 rungs, 3 sets of wall brackets for ladders with 10-15 rungs, 5 sets of wall brackets for ladders with 16-24 rungs.

1 set = 2 pcs. (right/left).

Attachment materials (dowels etc.) are not included in the scope of delivery.



Product features

Warranty

10 years

Weight

0.8 kg

Product variants

SKU	SKU	SKU
47301	47304	47307
Material	Material	Material
Galvanised steel	Stainless steel	Stainless steel
Suitable for	Suitable for	Suitable for
Steel ladder	V4A ladder	GRP ladder

