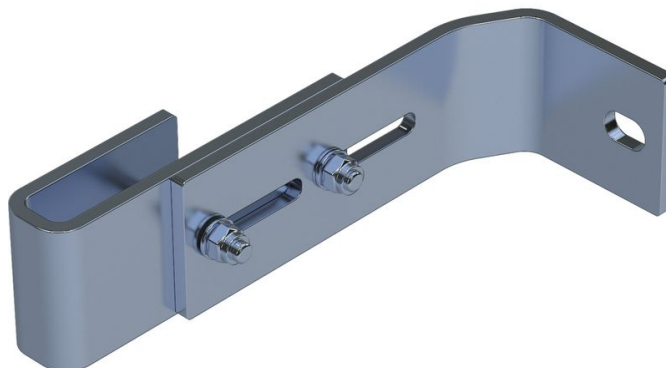




# Wall bracket, adjustable

## Product description

- Wall clearance can be adjusted from 150 mm to 190 mm.
- 1 set = 2 pcs.



## Hints and special features

2 sets of wall brackets are required for ladders with 4-9 rungs, 3 sets of wall brackets for ladders with 10-15 rungs, 5 sets of wall brackets for ladders with 16-24 rungs.

1 set = 2 pcs. (right/left).

Attachment materials (dowels etc.) are not included in the scope of delivery.

## Product features

Warranty

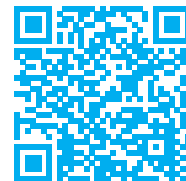
**10 years**

Weight

**0.9 kg**

## Product variants

SKU	SKU	SKU
<b>47314</b>	<b>47315</b>	<b>47316</b>
Material	Material	Material
<b>Galvanised steel</b>	<b>Stainless steel</b>	<b>Stainless steel</b>
Suitable for	Suitable for	Suitable for



Steel ladder

V4A ladder

GRP ladder