



# Wall bracket, adjustable

## Product description

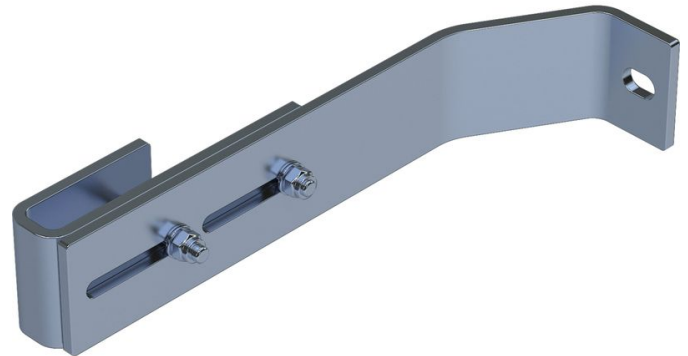
- Wall clearance can be adjusted from 200 mm to 250 mm.

## Hints and special features

2 sets of wall brackets are required for ladders with 4-9 rungs, 3 sets of wall brackets for ladders with 10-15 rungs, 5 sets of wall brackets for ladders with 16-24 rungs.

1 set = 2 pcs. (right/left).

Attachment materials (dowels etc.) are not included in the scope of delivery.



## Product features

Material	Warranty	Weight
<b>Stainless steel</b>	<b>10 years</b>	<b>1.8 kg</b>

## Product variants

SKU	SKU
<b>47612</b>	<b>47613</b>
Suitable for	Suitable for
<b>V4A ladder</b>	<b>GRP ladder</b>