

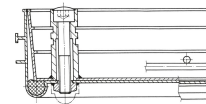


# Aluminium shaft covers with trough

Walkable or drivable shaft covers with choice of surface for indoor and outdoor use.

## Product description

- Compliant with DIN EN 124 in conjunction with DIN 1229.
- Tapered profile-section construction with multiple bolted joints.
- Easy to open, no jamming.
- Odour-tight and impervious to surface water.
- Load capacity for shaft cover with cover trough: test force 125 kN (= 12.5 t), only after the cover trough has been filled with B 45 concrete (grain 0-8).
- Incl. lift-out handles (pair) made from stainless steel, comprising one self-lifting opening handle and one lift-out handle.
- Trough depth 60 mm (of which 40 mm covered with construction steel grating and 20 mm free area)



## Product features

Design height	80 mm
Material, cover	aluminium
Material, frame	aluminium
Trough depth	60 mm

## Product variants



	47000	47001	47002	47004	47005	47007
Inside shaft length	300 mm	450 mm	500 mm	600 mm	635 mm	800 mm
Inside shaft size	300mm x 300mm	450mm x 450mm	500mm x 500mm	600mm x 600mm	635mm x 635mm	800mm x 800mm
Inside shaft width	300 mm	450 mm	500 mm	600 mm	635 mm	800 mm
Outside dimensions max. L x W x H	440 mm x 440 mm	590 mm x 590 mm	640 mm x 640 mm	740 mm x 740 mm	775 mm x 775 mm	940 mm x 940 mm
Transport dimensions	440 mm x 440 mm x 70 mm	590 mm x 590 mm x 70 mm	640 mm x 640 mm x 70 mm	740 mm x 740 mm x 70 mm	770 mm x 770 mm x 70 mm	940 mm x 940 mm x 70 mm

	47010
Inside shaft length	1000 mm
Inside shaft size	1.000mm x 1.000mm
Inside shaft width	1000 mm
Outside dimensions max. L x W x H	1.140 mm x 1.140 mm
Transport dimensions	1.140 mm x 1.140 mm x 70 mm

**ZARGES (U.K.) Ltd.**

Blackwater Trading Estate, The Causeway  
 CM9 4LJ Maldon, Essex

Tel: 01908 641118

Fax:  
[sales@zarges.co.uk](mailto:sales@zarges.co.uk)

[www.zarges.com/uk](http://www.zarges.com/uk)

Effective 28/6/2026  
 Subject to change or error.