

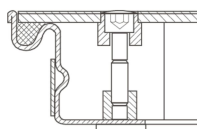


Galvanised steel shaft covers with cover plate

Shaft covers that can be walked on, with cover plate, for indoor use.

Product description

- Compliant with DIN EN 124 in conjunction with DIN 1229.
- Tapering section design, therefore easy to open. No sticking.
- Easy to open, no jamming.
- EPDM seal (petrol-resistant seal available on request).
- Odour-tight and impervious to surface water.
- Load with cover plate: test force 15 kN (=1.5 t).
- Incl. lift-out handles (pair) made from stainless steel, comprising one self-lifting opening handle and one lift-out handle.

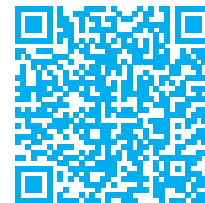


Product features

Design height	Inside shaft length	Inside shaft width	Material, frame
63 mm	600 mm	400 mm	Steel, galvanised

Product variants

SKU	SKU	SKU
47050	47051	47052



<p>Inside shaft size</p> <p>600mm × 400mm</p>	<p>Inside shaft size</p> <p>600mm × 600mm</p>	<p>Inside shaft size</p> <p>800mm × 600mm</p>
<p>Outside dimensions max. L x W x H</p> <p>760 mm × 560 mm</p>	<p>Outside dimensions max. L x W x H</p> <p>760 mm × 760 mm</p>	<p>Outside dimensions max. L x W x H</p> <p>960 mm × 760 mm</p>
<p>Transport dimensions</p> <p>760 mm × 560 mm × 70 mm</p>	<p>Transport dimensions</p> <p>760 mm × 760 mm × 70 mm</p>	<p>Transport dimensions</p> <p>960 mm × 760 mm × 70 mm</p>
<p>SKU</p> <p>47053</p>	<p>SKU</p> <p>47054</p>	
<p>Inside shaft size</p> <p>800mm × 800mm</p>	<p>Inside shaft size</p> <p>1.000mm × 1.000mm</p>	
<p>Outside dimensions max. L x W x H</p> <p>960 mm × 960 mm</p>	<p>Outside dimensions max. L x W x H</p> <p>1.160 mm × 1.160 mm</p>	
<p>Transport dimensions</p> <p>960 mm × 960 mm × 70 mm</p>	<p>Transport dimensions</p> <p>1.160 mm × 1.160 mm × 70 mm</p>	