

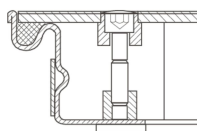


Stainless steel shaft covers with cover plate

Walkable shaft covers with cover plate for indoor use.

Product description

- Compliant with DIN EN 124 in conjunction with DIN 1229.
- Tapered profile-section construction with multiple bolted joints.
- Easy to open, no jamming.
- EPDM seal (petrol-resistant seal available on request).
- Odour-tight and impervious to surface water.
- Load capacity of shaft cover with cover plate: test force 15 kN (= 1.5 t).
- Incl. lift-out handles (pair) made from stainless steel, comprising one self-lifting opening handle and one lift-out handle.



Product features

Design height

63 mm

Product variants

SKU

47096

SKU

47098

SKU

47099



Inside shaft length 600 mm	Inside shaft length 800 mm	Inside shaft length 1000 mm
Inside shaft size 600mm × 600mm	Inside shaft size 800mm × 800mm	Inside shaft size 1.000mm × 1.000mm
Inside shaft width 600 mm	Inside shaft width 800 mm	Inside shaft width 1000 mm
Outside dimensions max. L x W x H 760 mm × 760 mm	Outside dimensions max. L x W x H 960 mm × 960 mm	Outside dimensions max. L x W x H 1.160 mm × 1.160 mm
Transport dimensions 760 mm × 760 mm × 70 mm	Transport dimensions 960 mm × 960 mm × 70 mm	Transport dimensions 1.160 mm × 1.160 mm × 70 mm