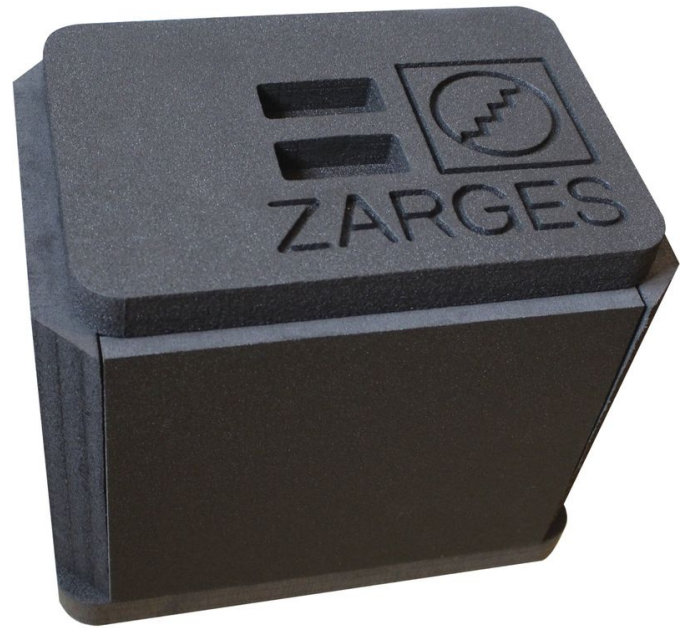




Insulation insert

Product description

- For temperature-controlled transport, e.g. in combination with ice packs or dry ice.
- Suitable for K 470 with inside dimensions 350 x 250 x 310 mm.
- 6-piece, wall thickness 30 mm.
- Easy self-installation by clamping. Removable for easy cleaning.



Product features

Dimensions	350 mm × 250 mm × 310 mm
Internal dimensions L x W x H	290 mm × 190 mm × 250 mm
Length	350 mm
Suitable for	Missing translation
Weight	0.5 kg
Width	250 mm

ZARGES (U.K.) Ltd.

Blackwater Trading Estate, The Causeway

CM9 4LJ Maldon, Essex

Tel: 01908 641118

Fax:

sales@zarges.co.uk

www.zarges.com/uk

Effective 9/6/2026

Subject to change or error.